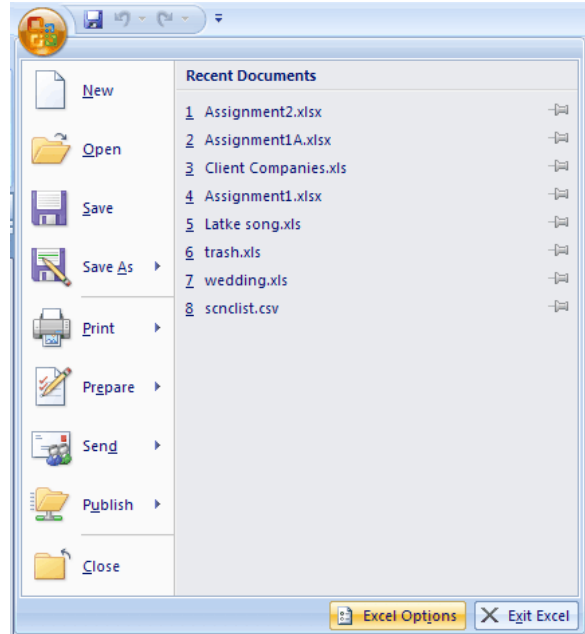


Installing Solver in Excel 2007

If Solver does not appear under the Data tab, install it.

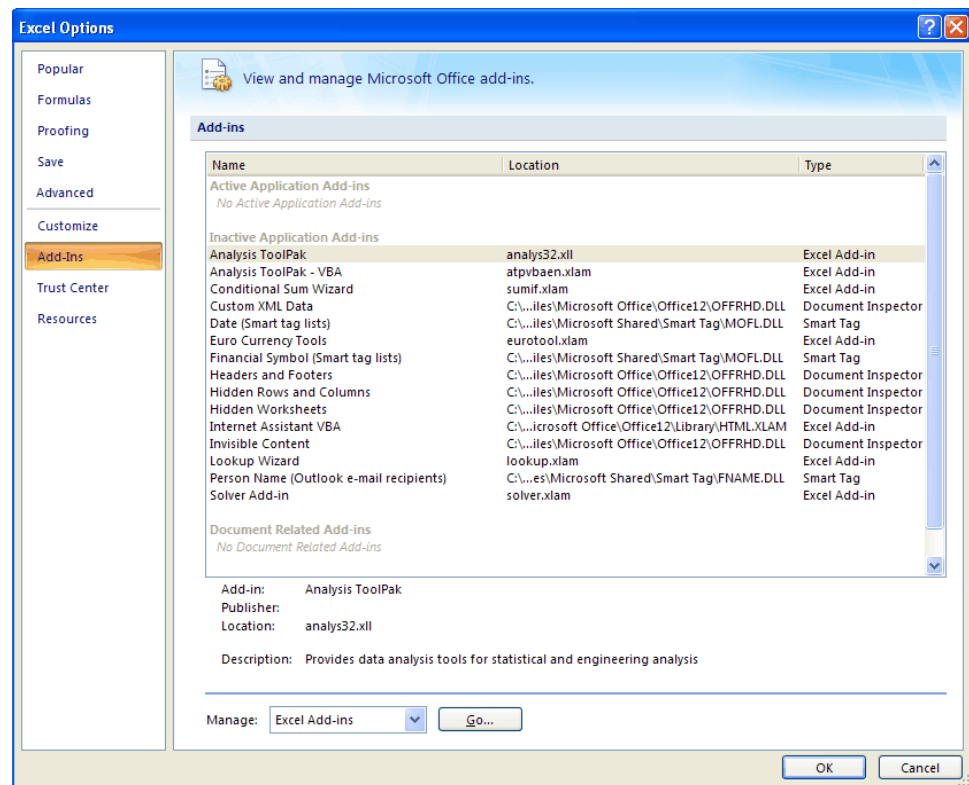
Click the Office Button. Click Excel Options.

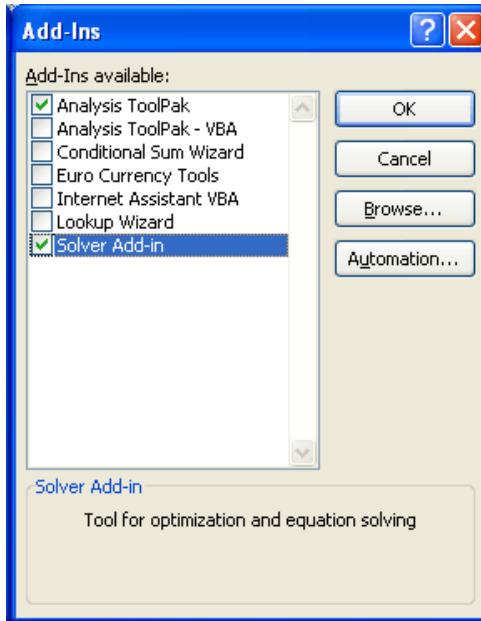


Click Add-Ins.

Hopefully, Solver Add-in will show on the list, as it did here.

Whether it is or not, look to the bottom next to Manage: Excel Add-ins. Click Go...



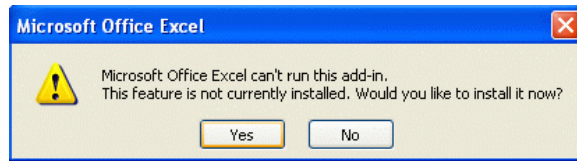


Check Solver Add-in. I recommend also checking Analysis ToolPak while you are here.

Click OK.

If Solver Add-in is not listed, click Browse to locate the add-in. You may need your Microsoft Office CD.

After clicking OK, you will probably get a box like this saying that the add-in is not currently installed on your computer. Click Yes to install it.



You may later get this dialog box again, because you are installing two Add-in features.

After you install these Add-ins, an Analysis group containing the Solver icon will appear if you click Excel's Data tab.

Solver is on the far right in this picture.

